

Route Report by Carrier

Performance statistics by carrier with drilldown to flight detail

ORD, MDW -> PDX

Apr 1, 2006 - Apr 30, 2006

Report Date: May 08, 2006

Page Count: 4 (including cover page)

Query Parameters:

Date Range

Starting: 4/1/2006

Ending: 4/30/2006

Airport: ORD, MDW -> PDX

Carriers: All Carriers

Include 'all cargo' carriers? No

Include non-scheduled flights? No

Delay Thresholds:

Late: Flight delayed 16 to 30 minutes

Very Late: Flight delayed 31 to 45 minutes

Excessive: Flight delayed more than 45 minutes

Abstract

This FlightStats report provides detailed ontime arrival performance metrics for all carriers serving the specified airport. Performance metrics include the number of ontime and late arrivals along with the delay statistics of average delay, standard deviation, minimum delay and maximum delay. The information is summarized by carrier with two levels of drilldown. The first drilldown summarizes the carrier performance information by departure airport. The second level of drilldown lists all of the flights that represent the route, sorted by flight number. Primary query parameters are arrival airport and date range. Optional parameters include a carrier filter and the ability to limit the report to carriers operating more than the specified number of flights.

Disclaimer

Customer acknowledges that all data provided or available through FlightStats is owned either by Conducive Technology, Lennoc BV or by third-party data providers (the "Owners"), and that Customer shall not acquire any ownership or interest whatsoever in such data. FlightStats data is solely for the benefit and purposes of Customer, and Customer is prohibited from publishing or selling, sublicensing, or otherwise transferring any part of the data to third parties, without written permission from Conducive.

The information contained in FlightStats reports has been compiled from various sources, and the Owners disclaim all responsibility for checking and verifying that the underlying data is 100% accurate. Consequently, the data is provided "as is" and Conducive provides no warranties of any type to Customer. Conducive and its data providers are not liable for any consequential damages or financial loss caused by any person's reliance on the data.

Company Information

FlightStats North America
Conducive Technology Corp.
735 SW 20th Place
Suite 220
Portland, Oregon 97205 USA
Tel. +1 (503) 274-0938
Fax: +1 (503) 274-0939

FlightStats Europe
Lennoc BV
The Gallery
Arnhemsestraat 47, 6971 AP
Brummen, The Netherlands
Tel: +31 (0)575 567046
Fax: +31 (0)575 563042

Copyright© 2005-2006 Conducive Technology Corp., and Lennoc BV

Visit the FlightStats website at www.flightstats.com

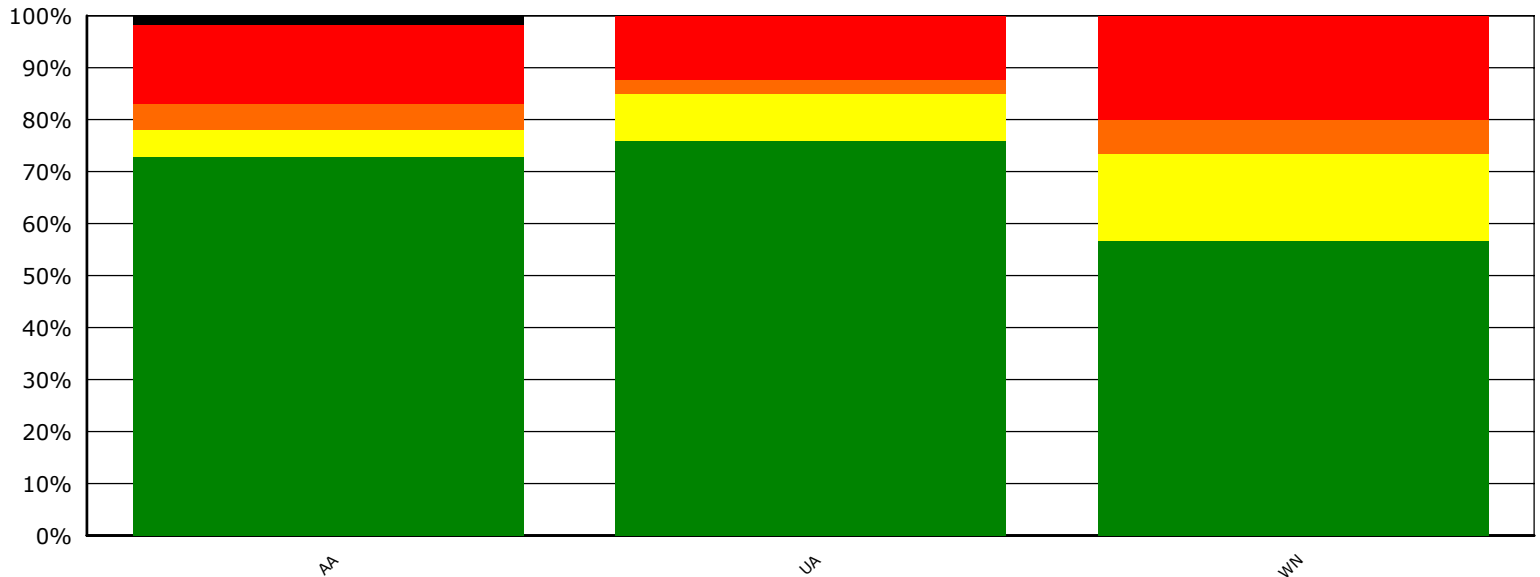
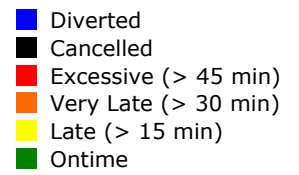
Route Report by Carrier

Performance statistics by carrier with drilldown to flight detail

Date Range: Apr 1, 2006 - Apr 30, 2006

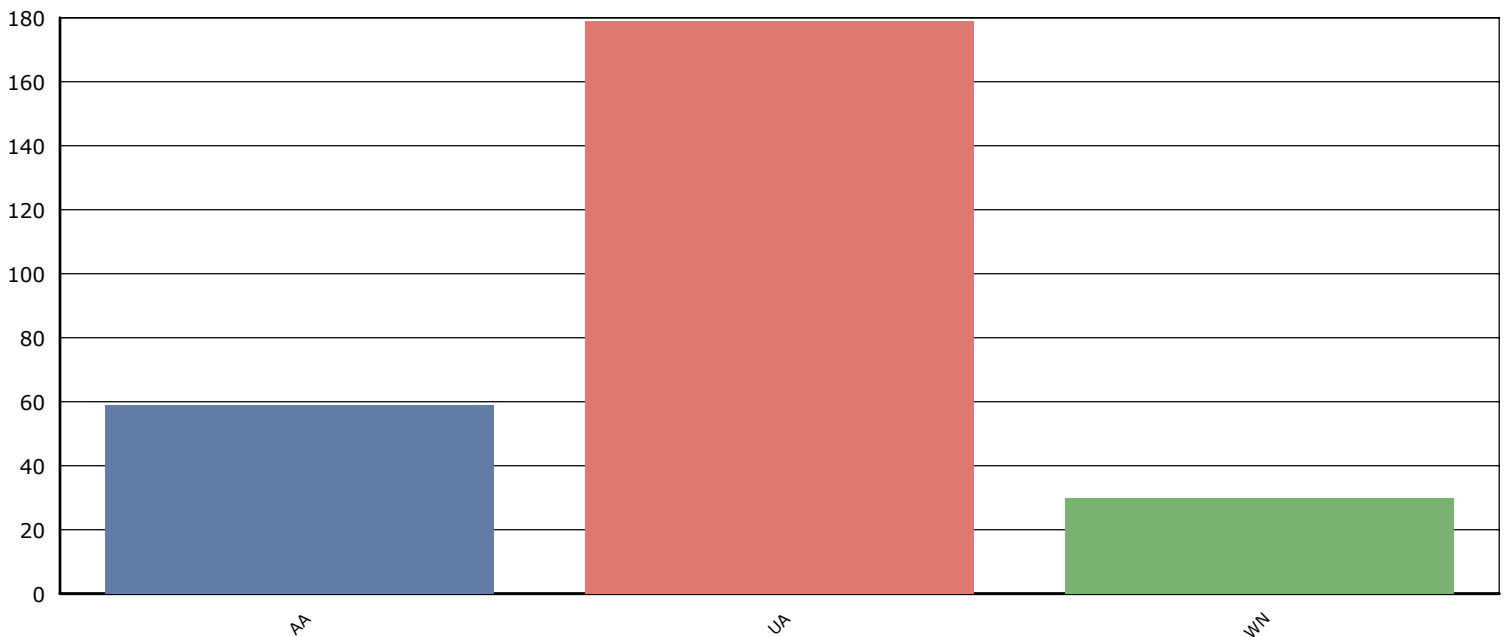
Route: **ORD, MDW -> PDX**

Carrier Arrival Performance



Carrier Service

Total Number of Arrivals



Route Report by Carrier

Performance statistics by carrier with drilldown to flight detail

Date Range: Apr 1, 2006 - Apr 30, 2006

Route: **ORD, MDW -> PDX**

Carrier Summary	Departure Statistics				Arrival Statistics					
AA American Airlines	Ontime:	43	73%	Avg. Delay:	60	Ontime:	43	73%	Avg. Delay:	60
Departure Ontime: 73% (Avg. Delay 60 minutes)	Late:	6	10%	Std. Deviation:	44	Late:	3	5%	Std. Deviation:	41
Arrival Ontime: 73% (Avg. Delay 60 minutes)	Very Late:	1	2%	Min. Delay:	15	Very Late:	3	5%	Min. Delay:	25
	Excessive:	8	14%	Max. Delay:	150	Excessive:	9	15%	Max. Delay:	151
	Cancelled:	1	2%	Avg. Taxi Time:	20	Cancelled:	1	2%	Avg. Taxi Time:	4
	Diverted:	<u>0</u>	<u>0%</u>	Min. Taxi Time:	9	Diverted:	<u>0</u>	<u>0%</u>	Min. Taxi Time:	1
	Total:	59	100%	Max. Taxi Time:	49	Total:	59	100%	Max. Taxi Time:	11
UA United Airlines	Ontime:	135	75%	Avg. Delay:	58	Ontime:	136	76%	Avg. Delay:	62
Departure Ontime: 75% (Avg. Delay 58 minutes)	Late:	19	11%	Std. Deviation:	50	Late:	16	9%	Std. Deviation:	53
Arrival Ontime: 76% (Avg. Delay 62 minutes)	Very Late:	6	3%	Min. Delay:	15	Very Late:	5	3%	Min. Delay:	15
	Excessive:	19	11%	Max. Delay:	209	Excessive:	22	12%	Max. Delay:	216
	Cancelled:	0	0%	Avg. Taxi Time:	17	Cancelled:	0	0%	Avg. Taxi Time:	3
	Diverted:	<u>0</u>	<u>0%</u>	Min. Taxi Time:	8	Diverted:	<u>0</u>	<u>0%</u>	Min. Taxi Time:	0
	Total:	179	100%	Max. Taxi Time:	32	Total:	179	100%	Max. Taxi Time:	7
WN Southwest Airlines	Ontime:	18	60%	Avg. Delay:	62	Ontime:	17	57%	Avg. Delay:	58
Departure Ontime: 60% (Avg. Delay 62 minutes)	Late:	4	13%	Std. Deviation:	40	Late:	5	17%	Std. Deviation:	39
Arrival Ontime: 57% (Avg. Delay 58 minutes)	Very Late:	0	0%	Min. Delay:	15	Very Late:	2	7%	Min. Delay:	20
	Excessive:	8	27%	Max. Delay:	120	Excessive:	6	20%	Max. Delay:	116
	Cancelled:	0	0%	Avg. Taxi Time:	11	Cancelled:	0	0%	Avg. Taxi Time:	8
	Diverted:	<u>0</u>	<u>0%</u>	Min. Taxi Time:	4	Diverted:	<u>0</u>	<u>0%</u>	Min. Taxi Time:	2
	Total:	30	100%	Max. Taxi Time:	33	Total:	30	100%	Max. Taxi Time:	9

Overall for this Route	Departure Statistics				Arrival Statistics					
Departure Ontime: 73% (Avg. Delay 59 minutes)	Ontime:	196	73%	Avg. Delay:	59	Ontime:	196	73%	Avg. Delay:	61
Arrival Ontime: 73% (Avg. Delay 61 minutes)	Late:	29	11%	Std. Deviation:	47	Late:	24	9%	Std. Deviation:	48
	Very Late:	7	3%	Min. Delay:	15	Very Late:	10	4%	Min. Delay:	15
	Excessive:	35	13%	Max. Delay:	209	Excessive:	37	14%	Max. Delay:	216
	Cancelled:	1	0%	Avg. Taxi Time:	17	Cancelled:	1	0%	Avg. Taxi Time:	4
	Diverted:	<u>0</u>	<u>0%</u>	Min. Taxi Time:	4	Diverted:	<u>0</u>	<u>0%</u>	Min. Taxi Time:	0
	Total:	268	100%	Max. Taxi Time:	49	Total:	268	100%	Max. Taxi Time:	11